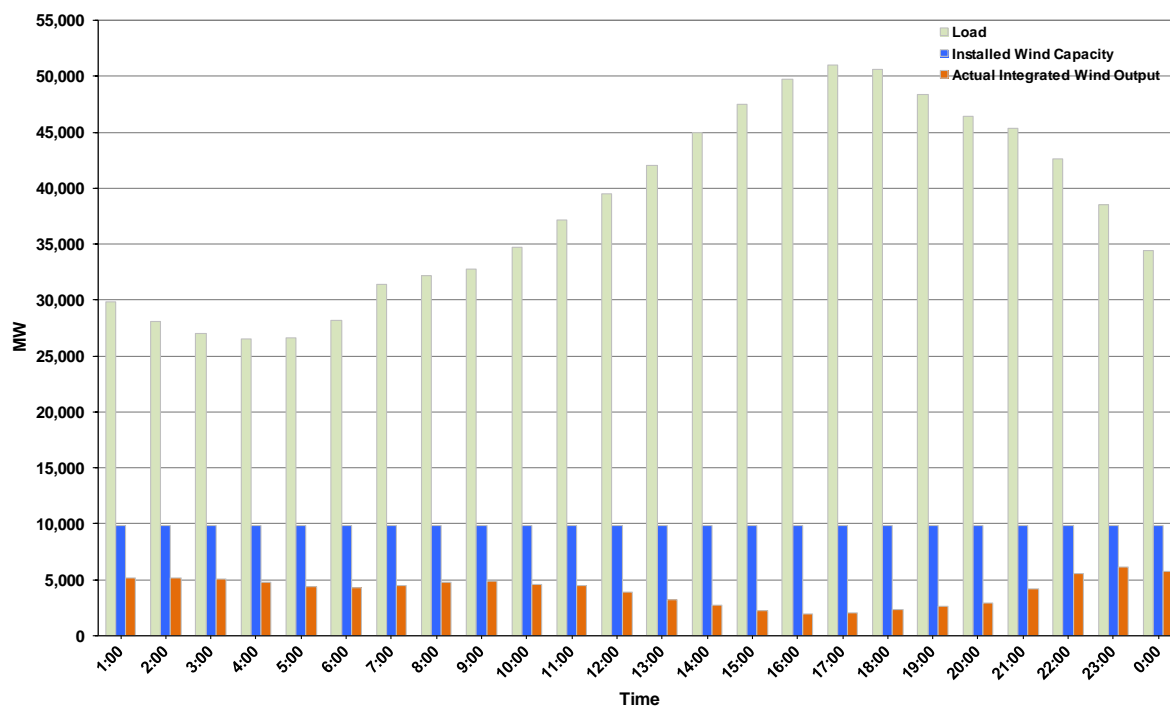




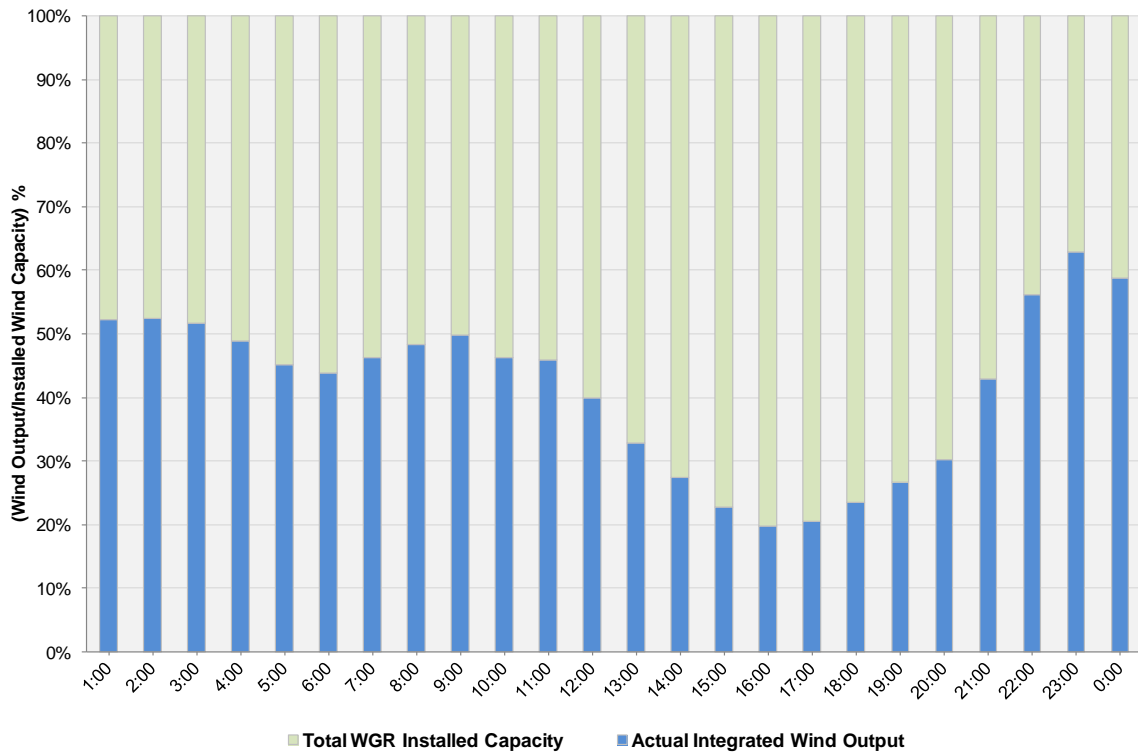
ERCOT Grid Operations Wind Integration Report: 09/20/2012

| | |
|----------------------|------------------|
| Peak Load | 51,044 MW |
| Load Peak Hour (HE) | 17 |
| Wind over Peak | 2,013 MW |
| Wind Record 06/19/12 | 8,368 MW |
| Max Wind Value | 6,230 MW |
| Wind Peak Time | 22:45 |
| Wind Integration % | 16.59% |

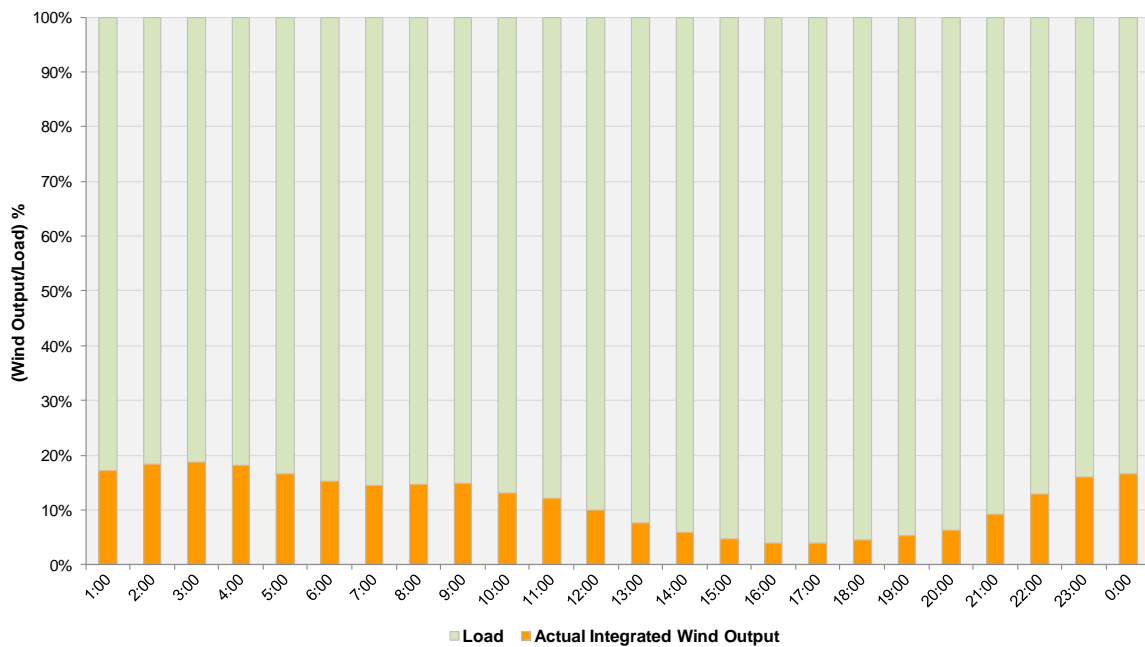
**Hourly Average Actual Load vs. Actual Wind Output
09-20-2012**



Actual Wind Output as a Percentage of the Total Installed Wind Capacity
09-20-2012



Actual Wind Output as a Percentage of the ERCOT Load
09-20-2012



ERCOT Load vs. Actual Wind Output 9/13/2012 - 9/20/2012

